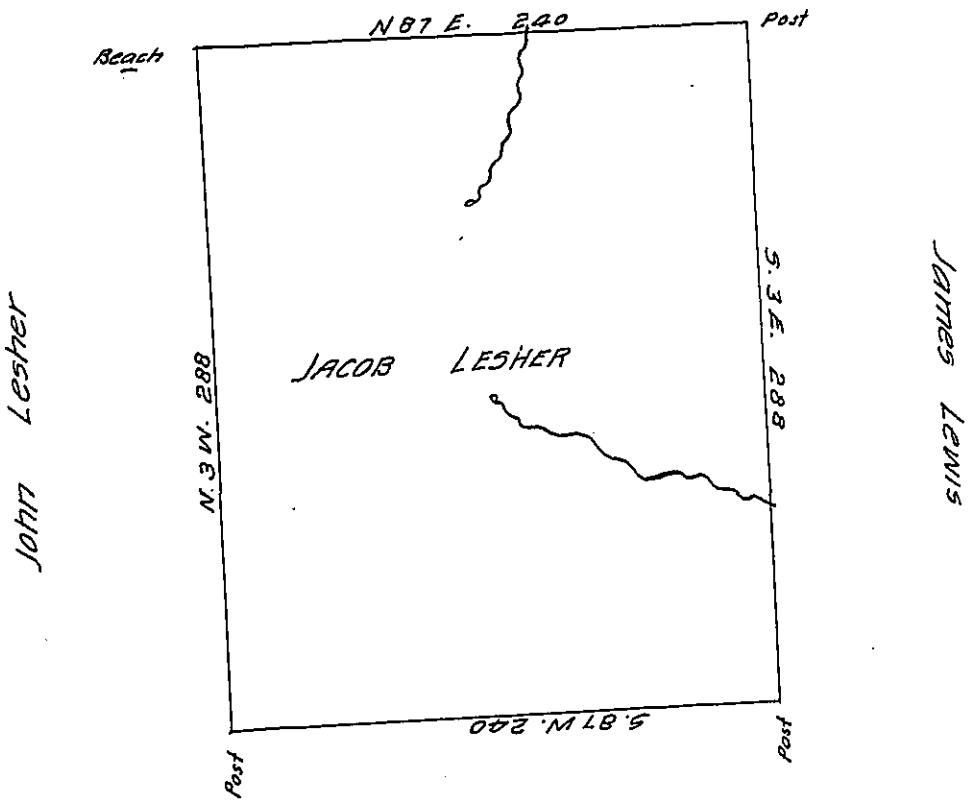


Thomas Leonard



Peter May

Situate on the waters of Big Beaver Creek in Dis-  
 trict No. 3 Allegany County. Containing four hundred and seven acres,  
 eighty six perches and allowance, surveyed 3 June 1796 in pursuance  
 of a Warrant granted Jacob Lesher 21 April 1794

Ben Stokely D.S.

Danl. Brodhead Esq. S. 6.

IN TESTIMONY that the above is a copy of the original remaining on file in  
 the Department of Internal Affairs of Pennsylvania, made  
 conformably to an Act of Assembly approved the 16th day of  
 February, 1833, I have hereunto set my Hand and caused  
 the Seal of said Department to be affixed at Harrisburg,  
 this thirteenth day of November 1905

*Loac. B. Pearson*  
 Secretary of Internal Affairs.